



2018-19 AGM REPORT

ONE SCHOOL. MANY FACETS OF LEARNING

MISSION

Giving our students roots in German and European cultures, we are a community school and, through excellent education, empower our students to contribute positively to tomorrow's world.

VISION

Giving our students wings, we aspire to develop them into life-long learners who will be successful and make a difference.



CONTENTS.



06

Lorem Ipsum
Dolor Set

08

Lorem Ipsum
Dolor Set

10

Lorem Ipsum
Dolor Set

12

Lorem Ipsum
Dolor Set

14

Lorem Ipsum
Dolor Set

18

Lorem Ipsum
Dolor Set

20

Lorem Ipsum
Dolor Set

24

Lorem Ipsum
Dolor Set

26

Lorem Ipsum
Dolor Set

28

Lorem Ipsum
Dolor Set

30

Lorem Ipsum
Dolor Set

34

Lorem Ipsum
Dolor Set

35

Lorem Ipsum
Dolor Set

39

Lorem Ipsum
Dolor Set

42

Lorem Ipsum
Dolor Set

45

Lorem Ipsum
Dolor Set



GUIDING STATEMENTS



Celebrating German and European roots

GESS is a high-quality international school that celebrates German and European roots and values.



Empowering our Students

GESS empowers all students to become knowledgeable, skillful and resilient individuals to reach their full potential.



Holistic and Humanistic Education

GESS offers a holistic and humanistic education, a choice of curriculum, with social responsibility, in pursuit of excellence.



Prepare Students to become Global Citizens

GESS prepares students to successfully navigate a changing world as global citizens to create a sustainable future.



Be a True Partner for your Family

GESS is a non-profit community school and a true partner for your family.

BOARD OF GOVERNORS

→
Second row: Placeholder

→
Front row: Placeholder



PLACEHOLDER



PLACEHOLDER

ORGANISATIONAL STRUCTURE



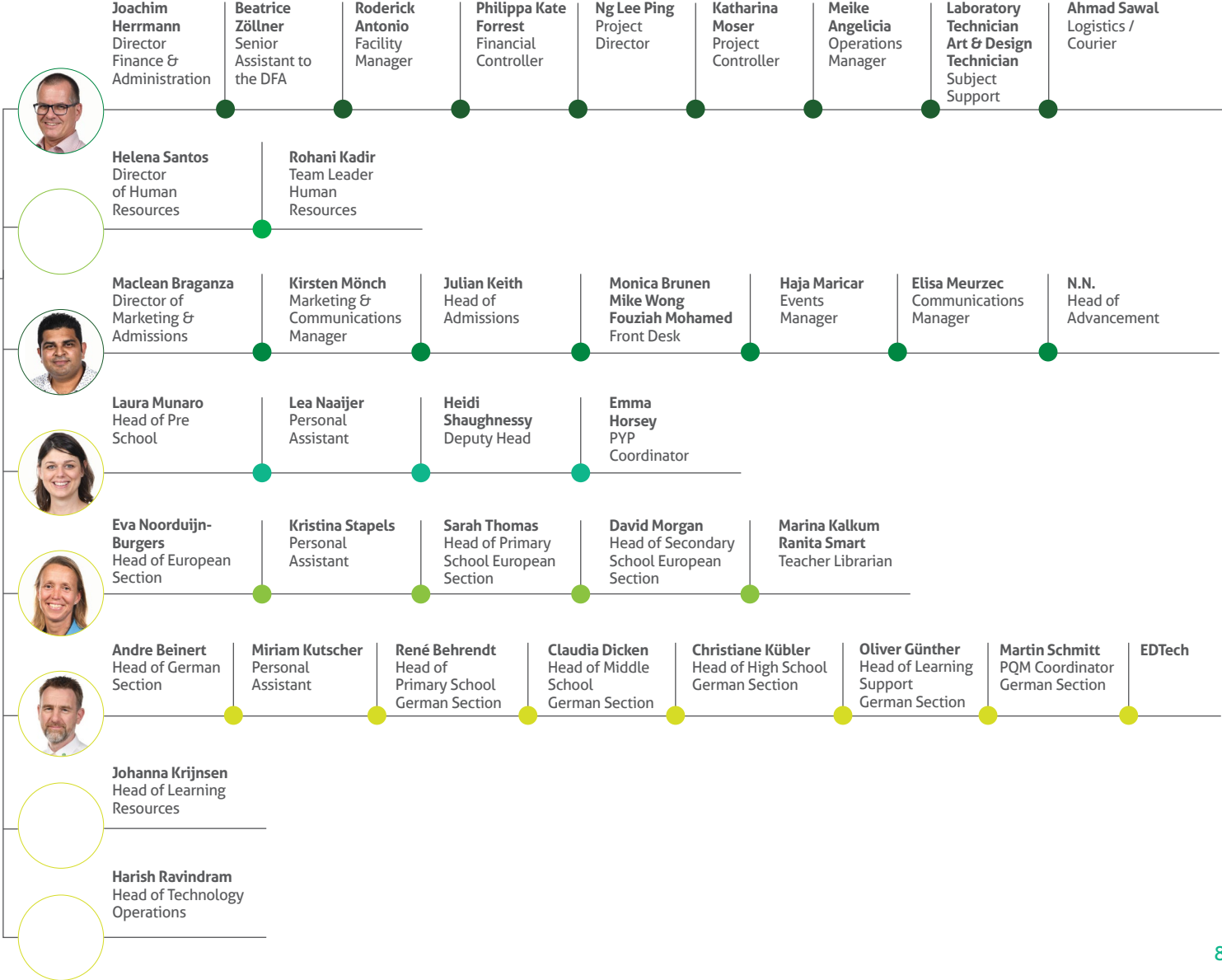
Board Of Governors
Rachel Ward
President



Christoph Zänglein
Principal

Kirsten Zarcone
Board Secretariat Office

Katharina Brüning
Executive Assistant to the Principal





EDUCATION





Top left:
Placeholder

Bottom left:
Placeholder

Top right:
Placeholder

Bottom right:
Placeholder



PRINCIPAL'S REPORT

In the academic year 2018/19 we continued working on and finalised projects from the previous year, but also initiated new projects. In the following report I will outline the main projects and what we focused on.

GRADUATION

We can be very proud that all 31 grade 12 students from the German Section graduated with the Abitur with an average result of 2.21, whereby our best student has achieved the average result of 1.2.

Our 39 students from grade 12 of the European Section can be proud of an 88% IB Diploma pass rate (compared to a 77.40% pass rate worldwide) and an average score of 32 points, which is above the global average of 29.63. The student with the highest score achieved 44 out of maximum 45 points.

Many of our students were accepted in universities in Germany, the UK, the Netherlands, Switzerland, Canada, Italy, Belgium, Australia and New Zealand. One student will start his military service here in Singapore and the rest

will either use the next year as a gap year to travel, start an employed internship or an apprenticeship.

FOCUS AREAS OF THE ACADEMIC YEAR 2018/19

In November 2017 all stakeholders were invited to a kick-off meeting with the aim to start the process to create a school development plan. This was followed by several meetings and workshops attended by all stakeholders. At the end, we reconfirmed the three values of GESS, respect, openness and inclusiveness, adjusted the vision & mission and finalises five strategic priorities for the next three school years.

Another aspect, especially for the Senior Management Team (SMT), was to start the process to review the Appraisal System. With our new Director of HR on board we will develop an Appraisal System that benefits our staff members as well as the school as an employer.

At the beginning of the school year 2018/19 the Steering Committee



We can be very proud that all 31 grade 12 students from the German Section graduated with the Abitur with an average result of 2.21, whereby our best student has achieved the average result of 1.2.



Christoph Zänglein
Principal



changed its set-up to now represent all three educational Sections. Amongst the members of this committee is also one board member and one member of the Council of Parent Representatives. The mandate of the Steering Committee is the Pedagogical Quality Management (PQM) as well as the continuous development of the school from a pedagogical point of view. Ten workgroups were formed and are commissioned by the steering committee (Sprachbildung Deutsch, Spanish as second foreign language, Well-Being at GESS, Cooperative Learning (German Section - GS), Integration of EdTech, Competency Framework, Inclusion, Evaluation/ SEIS, Competence Orientation (GS), P-21 Implementation) so that school development is led by the steering committee and better structured than in the past.

AREAS OF DEVELOPMENT

In the last school year, we focused on the implementation of our EdTech plan. There were many training sessions offered for our employees, internally by our EdTech coaches as well as through external providers from Edukinect. This year, the focus on digital learning has shifted, as we are following a four-year plan for the further development of

our employees and have now reached level two.

The Preparatory Visit for the re-accreditation process of CIS took place in March 2019. In 2020, we will be visited by both, the CIS and the IB to complete the re-accreditation process. A Peer Review will also be held in 2020 in preparation for the Bund-Länder-Inspektion (BLI) in 2021. Preparing for the inspections is very time-consuming, but it is very beneficial for the school and of the utmost importance.

EDUCATIONAL DEVELOPMENT

German Language Development

Based on a need for learning support in German language in both sections, a working group, operating on behalf of the steering committee, has developed a concept to help optimise verbal and written language proficiency.

Junior Engineer Academy (JIA)

After successfully submitting our topic "Sustainable Urban Living Spaces" and officially being a member of the JIA network since April 2018, we developed the curricula for four semesters and lessons at GESS started with 15 students in August 2018. This successful project is now entering its second year. The experience of teachers and students after the first year is very good and

the recruitment for the next group of students has already begun.

STUDENT EXCHANGE PROGRAMME

We have an exchange programme with our partner school, the Friedrich-Dessauer-Gymnasium in Aschaffenburg, Germany since the academic year 2018/19. The first visit took place in October 2018 where 22 German students visited Singapore and in October 2019, GESS students will visit the school in Germany. The motto for this visit will be "Germany – A country to live and to study in". In autumn 2020, our partner school from Aschaffenburg will visit us again in Singapore.

Higher student numbers led us to open six additional classes in the Primary and Secondary School. The necessary conversion work has been completed during the summer break.

OUTLOOK

In the past 13 years, GESS student numbers tripled. The school management and administration, with the new school building on top, was extremely challenged over the past years and had to react to new situations in order to master the consequences of a growing school.

Due to the size of the school and the variety of departments, the Board of Governors (BoG) has decided to hire a General Manager (GM) who will report to the principal and oversees the administration department. The approach aims to ensure that in future the principal can focus more on the school's pedagogical development. As we have now more than 400 employees, the school decided to create an additional position, the HR Director. With the HR Director and GM, the SMT will have two more members. A decision on what the SMT will look like in the future will be made at the beginning of the school year 2019-20.

THANK YOU

I would like to take this opportunity to thank all members of the GESS community for their support this academic year. A special thank you to many very active parents, who are engaged in voluntary work at the school. This includes our members of the Board of Governors, the members of the Parents' Committee, the Parent Representatives, the members of the Buddies Committee and the Events Team.

C.A.R.E

C.OMPASSION A.CTION R.ESPONSIBILITY E.NVIRONMENT

The C.A.R.E. committee overlooks all fundraising activities at GESS for external social organisations. The following report outlines all projects of the previous academic year.

Students are actively involved in those projects, so the pedagogic approach, to educate children and young adults early on that it is important to do volunteer work, is fulfilled.

One of the biggest projects of C.A.R.E. and one of the highlights for the students during their school career, are the social projects in grade ten, supporting projects in India and Cambodia. This year, the students have collected a total of S\$ 38,000 funds. In addition to this, they collected S\$ 22,464 at the Christmas Bazaar 2018 and according to the GESS matching programme, the school contributed the amount of S\$ 18,000.

In order to reach the target of the project this year, grades ten of the AY 2019/20 have started to collect funds, e.g. at the basketball tournament. In addition to this, we can count on the income from the Christmas Bazaar 2019, the donations of the students and several bake sales and sausage sizzles.



The project 'Kits4Kids' was again a big success in the academic year 2018/19. The Primary School collected S\$ 2,500 (as of May 2019) with selling used school uniforms, S\$ 1,800 at the 'Run-athon' and S\$ 4,400 at the flea market. Furthermore, two Casual Days contributed S\$ 4,400 to the 'Kits4Kids' fund. In the second half of the academic year we received the devastating news that the ship 'Vega' was damaged and that the project cannot continue without an expensive repair. Therefore, the Primary School decided to spontaneously organise fundraising activities, e.g. a flea market, and collected funds of S\$4,400.

At the annual Primary School Swim-Gala, the students collected S\$ 4,600 to support children in Hanoi and give them the opportunity to pay for their swimming lessons. The Student Council organised eight Casual Days during the year. An amount of about S\$ 13,000 from these Casual Days was donated to our C.A.R.E. projects 'Blue Dragon' and 'Kits4Kids'.

The GESS community proofed to be generous and willing to support children in need, which makes us very proud and is an evidence for our encouraging community spirit and culture of giving.

GESS is extremely thankful for your contribution to the success of the organisations we support.
Thank you very much.

SECONDARY SCHOOL

Donations the social projects in India and Cambodia

- \$ 38,000 collected by 10th grade students
- S \$ 22,464 proceeds from the Christmas Market 2018
- S \$ 18,000 grant from GESS

PRIMARY SCHOOL

Kits4Kids'

- S \$ 2,500 sales of used school uniforms
- \$ 1.80 Run-athon
- S \$ 4,400 Casual Days
- S \$ 4,400 Vega Kits4Kids rescue

OVERALL:

S \$ 13,000 Casual Days for the C.A.R.E. projects: 'Blue Dragon' and 'Kits4Kids'.



PRESCHOOL

STUDENTS

The Preschool started with 243 students. By the end of the year we had a +34% increase in student numbers with 322 students, almost the highest ever. The concepts that registered major interest have been Pre-Kindergarten, Toddler and Dual-Immersion classes.

The Preschool has been committed to developing the concept of Inclusion and different actions were taken to support children with diverse needs.

34% increase
in student numbers



332
students,
highest ever

STAFF

Recruiting thoughtfully and intentionally was a big focus. Recruiting for German speaking staff has continued to be a challenge, but one the Preschool management team has been working to overcome.



CURRICULUM, ASSESSMENT AND INNOVATION

The Preschool faculty has engaged in:

- The implementation of the Enhanced PYP (launched by the IB in October 2018).
- A review of the Preschool report cards, to align them with the current philosophy and pedagogy of the Preschool.
- The implementation of the Dual-Immersion Program. As a result, there has been a significant increase in language acquisition for those students enrolled in the program in both languages of instruction (German and English).
- The implementation of the Toddler Program. After starting the program with four children, in January 2019 a second class was opened.
- A professional development opportunity was provided for all Preschool staff, with educators from Reggio Emilia visiting and consulting exclusively with GESS for a week.
- The Preschool participated in a research study about offering children more

uninterrupted time for play and inquiry through a more flexible timetable structure.

CONCLUSION

This was a very successful year for the Preschool. Students and teachers have settled in well to their new learning environment and made use of the new resources and facilities. The learning spaces contributed to enhancing the experience for children and families. Concept of using the environment as the 'third teacher'. Two working groups were established to design and plan the classroom setup and the pods (shared learning spaces).

The preschool management worked in collaboration with the company CT Art to design and create the preschool playground. The whole faculty attended a dedicated workshop to further their knowledge and understanding about how the environment can facilitate and enhance learning.

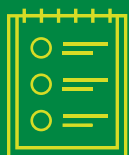


EUROPEAN SECTION

STUDENTS

The European Section had student numbers maintained above budget level, starting with 727 students in August and ending the year with 748 students. There were 3 classes per grade level, except for grade 9. Towards the second half the year, we saw increased interest by families wishing to enroll their children in the European Section at GESS.

It was decided to open a fourth class in grades 3, 5, 7, 8 and 9 for 2019-2020. To compensate for over-enrolled classes in the Primary school between January and June 2019, an extra teaching assistant was recruited.



ending the
year with
748 students

STAFF

6 new staff members joined the Primary school, European section and 8 new staff joined the Secondary school, but the leadership teams remained the same. In the Primary school, Sarah Thomas was Head of Primary school, assisted by Joram Hutchins and Giovanna Platania. In the Secondary school, David Morgan was Head of Secondary school, assisted by Alison Samuels, Richard Kent and Joanna Fitts. David Morgan and Sarah Thomas attended the SEARCH recruitment fair in Singapore in October; Eva Noorduijn and David Morgan attended the SEARCH recruitment fair in January in Bangkok.

Both these fairs proved invaluable in terms of marketing GESS as a desirable school to teach at and finding quality staff to recruit. Given the opening of 5 new classes in the European Section, recruitment took up a large part of the school year, culminating in two late appointments in July/August for an immediate start.



CURRICULUM

- In the Primary school, the PYP teachers started looking at the Enhanced PYP which is a revised version of the current IB Primary Years Programme.

- In the Secondary school, as outlined in the strategic plan, information was gathered about the IB Careers Programme which will hopefully be introduced at GESS as an alternative to the IB Diploma Programme. New DP subjects were offered to students; from August 2019, students can choose Psychology and Theatre as DP subjects.

- The IB conducted a one-day consultation visit in January 2019 to visit our new campus and to evaluate the one PYP we now have from Kindergarten in the Pre-school to grade 5 of the European Section.

GRADUATES

In May 2019, 35 students took IB Diploma examinations. Of those 35 students, 1 student left to complete National Service in Singapore, 5 took a gap year and 22 were ready to start their further studies at university with nearly all of those students able to enter their university of choice. 9 students were still applying to

university at the time of writing this report. One student was awarded a scholarship for her excellent IBDP results. The average IBDP score was 32 and the highest score was 43 points.

Average IBDP

score was
32



Highest
score was

43 points



CONCLUSION

This has been another successful year for the European Section. Teachers have settled in quickly to their new teaching environment on campus and they continue to build up the reputation of GESS in the competitive market of international schools in Singapore. Indeed, we are seeing less students leave GESS for other schools in Singapore and more students transferring from other schools in Singapore to GESS. At the time of writing, all new classes in the European section had 20 students or more – evidence that the strategic decision to open new classes was the correct one.



GERMAN SECTION

The school year 2018/19 was again a very successful year for the German Section. The academic results were excellent. Thirty-one students have successfully passed the Abitur with a grade point average of 2.1. The best individual Abitur result was 1.2 and like in the past 5 years the passing rate was again 100%. These results are significantly above the world-wide average of German Schools abroad.

The final middle school exams in grade 10 (Realschulabschlussprüfungen) were also successful. The grade point average was 2.6 with 2.0 being the best individual score. All of our 13 students who took the exams have passed the final exam while 12 of them gained the additional qualification to enter the Abitur programme.

All of our students in Grades 3 (German / Mathematics), 6 (German / Mathematics) and 8 (German / Mathematics / French) are participating in benchmark tests from Baden-Württemberg and Thuringia. These

benchmarks are not primarily designed for individual diagnostics but rather serve as a tool to monitor and stimulate pedagogical quality development. The results clarify for example, which competencies and topics were relatively easy or challenging for our students. It is reassuring for us to know that in German and Mathematics all our classes scored above the average of Baden-Württemberg and Thuringia respectively.

Student numbers in the German Section continue to grow. With 680 students in the academic Year 2018/2019, we reached the highest level of enrollment ever. Unfortunately, for some grades this meant that we had to go beyond our own target of 24 students per class. Consequently, we have opened an additional grade 4 class for the current school year.

In primary school, the concept of literacy acquisition for grades 1



Abitur Grade point average was **2.1**



Abitur Passing rate was of **100%**



and 2 was reviewed and standardized. It will be implemented from the academic year 2019/20 onwards. Our "Deutsch +" program for supporting and challenging students has successfully been expanded into grades 3 and 4 and its approach has broadened at the same time. Due to the move of the Language Enrichment Program (LEP) to the later afternoon an additional ENP program for Wednesdays period 7 and 8 had to be created. The program was very well received, but as expected, enrolment in the Language Enrichment Program declined significantly.

In time with the move to our new campus our middle school has made deeper connections with the European Section. Not only do we now share a common rooming concept but also have developed a curriculum for cross-sectional Spanish courses that satisfy the requirement of both, the IBO MYP and the KMK. Courses have started with grade 6 this academic year. Students from the German Section can therefore now choose between French, Latin and Spanish as a third language. During the AY 2018/19 we have also started a cross-sectional exchange program with the Friedrich-Dessauer-Gymnasium in Aschaffenburg, Germany. At the same time the trend has continued of our students participating in half-year long exchanges with students from France.

Our high school students are benefitting, too, from a widened choice of available courses as we have introduced Economics as an alternative to Geography.





Top left:
Placeholder

Centre left:
Placeholder

Bottom left:
Placeholder

Top right:
Placeholder

Bottom right:
Placeholder





Placeholder



Placeholder



ADMINISTRATION

ADMINISTRATION

The first year of operation at the new Dairy Farm Campus is over. Our prudent conservative financial operations enabled us to not only finance this project, but to also finish the project with smaller debt than originally planned.

As in the last 9 years, we were again able to further strengthen our cash position in the academic year 2018/19 and therefore the Board of Governors was in the position to repay S\$7mil of our S\$11mil Facility Agreement loan with Deutsche Bank in the 1st Quarter 2019.

Moreover, we have only drawn down S\$60mil of our S\$75mil credit facility with UOB. Both reductions mean significant savings on interest payments and therefore more financial resources for our core business, educating our students.

It was the vision of the Board of Governors, the School Management and the Project Team to create a safe, modern and engaging learning space for our students. Our vision is now a reality. Our new campus has opened an exciting new chapter in the school's development and the new building benefits the whole community. It gives the school a suitable and fitting frontage that reflects

the quality of the education that goes on behind it.

In addition, we are keeping our promise to the Singapore Government that we are sharing our facilities with the local community. Already in this first year of operation a number of local organisations used our Sport field, the Sport hall and the Auditorium for their activities. Strong partnerships were created from which GESS and the local community will benefit in the future.

Many thanks to all who have helped us so selflessly over the years with their expertise.

Aside of the above, the Admin teams were busy with the implementation and finetuning of our enhanced Security and Safety processes, reviewing the new costs structure of our Dairy Farm campus and negotiating the final accounts for the construction of the building. These are just a few examples of a very challenging year. Detailed work and achievements of our Facilities, Operations, and Finance are reflected in the other reports of the individual department heads.



CHECK

CHECK

FINANCE

The financial year 18/19 was the first full year on our new reporting system, Synergetic, and this enabled a smooth and fast close of the prior year.

The first school year in the new campus has brought new financial challenges for the school. The maintenance of the debt service covenant ratio that we were bound to as the terms of our bank loan for the new building was our most important goal. This meant maintaining a healthy EBITDA as a signal that GESS can cover future interest and capital payments relating to our debt.

Cash flow planning has also become a high priority to ensure we have sufficient cash reserves to repay the capital instalments of the loan as well as cover day to day running costs. The true nature and extent of the expense

of running the new campus has become clearer throughout the year as existing warranties expired and new service contracts were set up.

Fortunately, with student numbers increasing faster than expected and careful cost planning and control, we have met and exceeded all financial targets.

Average student numbers for the year were 1,711 against a budget of 1,565. The Pre-School has recovered from the fall in student numbers of recent years and has reached its former level of 320+ students. Thus, we saw an increase of 38% on average numbers for the year against budget. The German and European sections also increased by

approximately 6% against budget, which is also a very encouraging result given the already high increases we had achieved in recent years.

Higher student numbers do necessitate additional teachers and teaching materials, but despite the extra costs incurred, our EBITDA will exceed the budget for the year.

As the campus is now completed and in use, our balance sheet shows the building as a depreciable asset rather than WIP. This has had a large impact on our depreciation charge for the year and as such will reduce our net result.

However, looking forward, GESS is in a very sound financial position. Student numbers are still increasing, and our cost base is understood and well controlled. Cash flows remain healthy and we are investigating ways to invest the cash reserves in low-risk products to further increase revenue streams.

CHECK

PLACEHOLDER

PLACEHOLDER

PLACEHOLDER

PLACEHOLDER

IT REPORT

We had a very busy year, starting with the restructuring of the entire IT organization in order to ensure the continuity of service and support for the whole school.

Our IT team which comprises of twelve people was split in three groups:

- Service Desk & End User Services
- IT Infrastructure Services and
- Software Application Services

The team had the strong desire to research and learn on the job while understanding that customer service is the key building block in the creation of our new IT organization.

We then introduced a six-month action plan to tackle the immediate pain points for our community. Below are some of key accomplishments during the last academic year, namely:

- Scrutinizing the billings of our various telecommunication services, for cost effectiveness and accurate inventory.
- Reviewing all software, used by the IT and other school departments for cost effectiveness and accurate inventory.
- Placing relevant checks and balances on the IT purchasing process in order to control IT operational spends for the school. This resulted in savings of \$476k+ against an allocated budget of \$1.5m+;

- Terminating projects and service contracts which were deemed non mission critical for the school. This resulted in savings of \$150k;

- Improving the performance and call qualities for office desk phones by setting the Wi-Fi Network speed for voice services to 2.4Ghz;

- Stabilizing the new Wi-Fi network to ensure coverage across campus regardless of the type of computing device (laptops, smartphones or tablets) used;

- Working directly with Apple to resolve intermittent issues with network printing.

On the Software Application front, we continued to ensure data is brought together seamlessly when working on current and future software application projects. Below are a few examples of projects completed for our community:

- Admissions Department - HubSpot (used for advertising and enrollment) and SYNERGETIC (school management system) were integrated bringing data of future parents/ students together;
- School Services - Security of the upload channel for parents to update visa and passport information directly into our school database was enhanced;
- Learning Resources –Synergetic and the existing library management system Oliver were integrated;

- Finance and various Department / Sections Heads - Budgeting reports, dashboards for technology assets and service desk were created;

- The Academic community received support in creating SEQTA (learning management system) report cards.

Apart from the day to day School IT operations, we also focused on completing the Dairy Farm Technology Program together with the various appointed suppliers. This Program was initiated as part of the move from the old campuses in Bukit Tinggi and Jalan Jurong Kechil to the new campus. It comprised the following projects:

Project 1- Wi-Fi & Network Infrastructure

Project 2- Secure Gateway Internet Platform

Project 3- Secure Network Printing

Project 4- Upgrade of In-House Legacy Network Server Hardware

Project 5- Technology for Classrooms

Project 6- Technology for Meeting Rooms

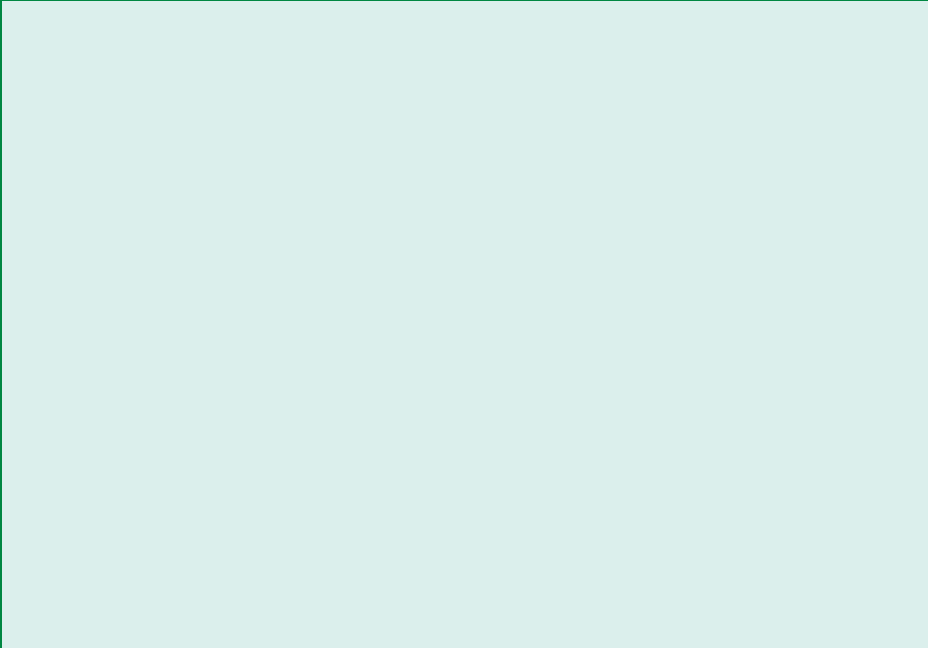
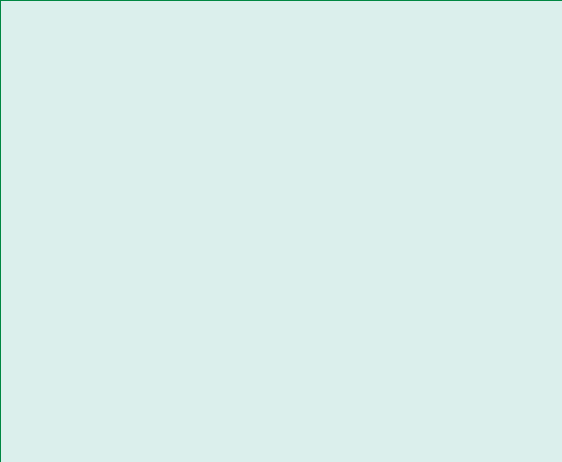
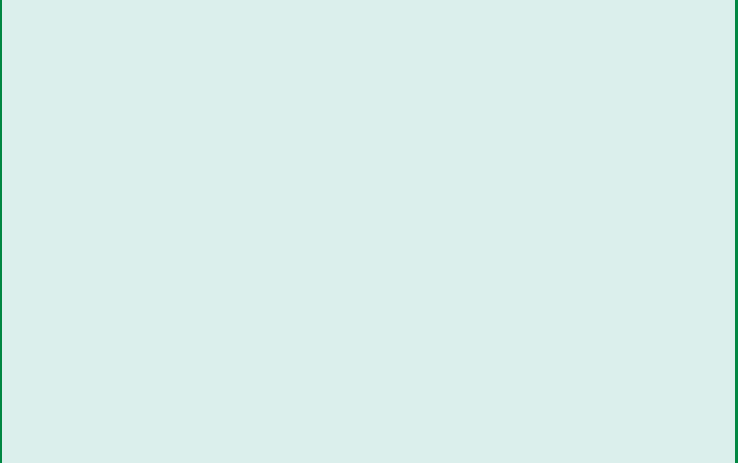
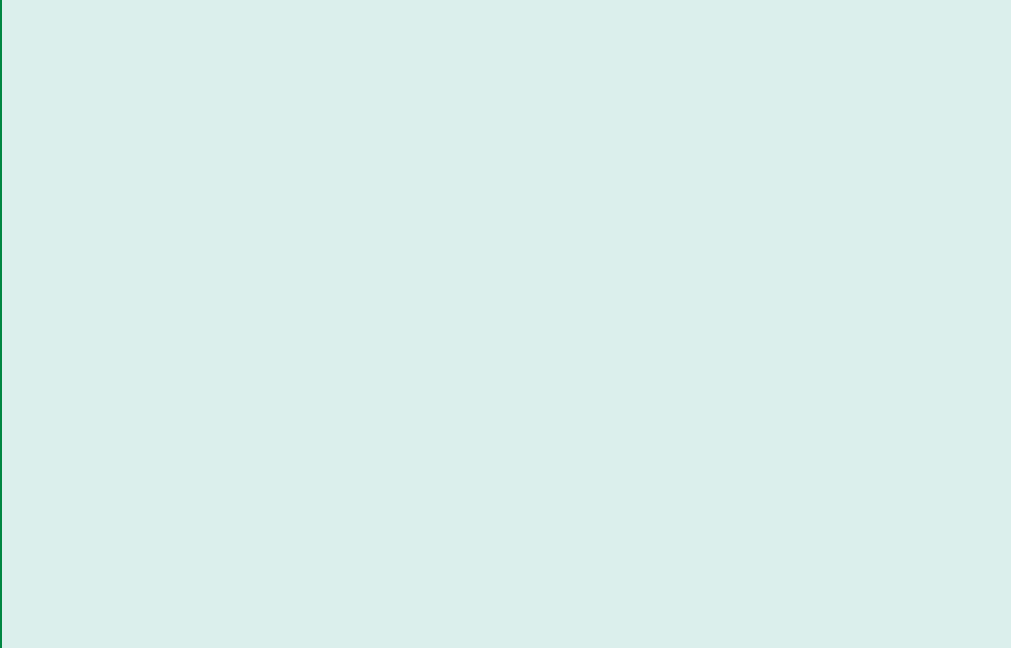
Project 7- Digital Signage Platform for Key School Areas

Project 8- Radio Frequency Identification Solution for School Library

Project 9 -Point of Sale System for School Canteen, Satellite Cafe & School Shop

Project 10 - Identity Card Management System for Students and Staff

Collaboration between the Educational Technology Coaches (EdTech) and IT Department improved two folds during the past academic year. A strategy from EdTech to introduce pen-enabled computing for our school, brainstormed for close to three years, finally took shape from the third quarter of the last academic year. With the endorsement from the school leadership team, teachers from Pre-school and All-Primary (German and European Sections) will would continue to remain on Apple devices in view of the investment made from academic year 2017/18 onwards. While teachers from All-Secondary (German and European Sections) would be standardized on Microsoft Windows devices. Devices under the shared and 1:1 program for students were also refreshed. A total of 2000+ devices comprised of Microsoft Surface Pro, Microsoft Surface Go, Apple MacBook Pro and iPads were successfully built and deployed three weeks before the start of the new academic year 2019/20.



Top left:
Placeholder

Bottom left:
Placeholder

Top right:
Placeholder

Bottom right:
Placeholder

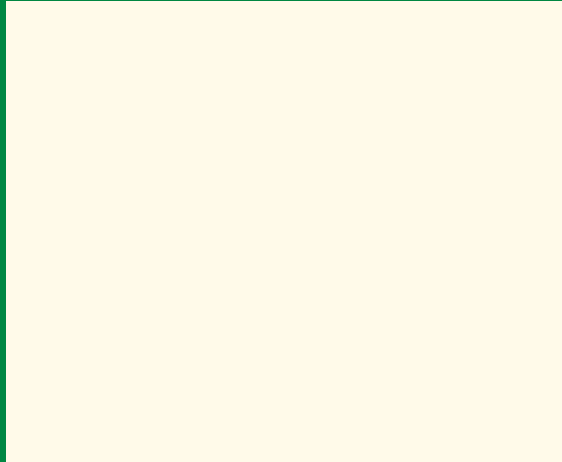


Top left:
Placeholder

Bottom left:
Placeholder

Top right:
Placeholder

Bottom right:
Placeholder



FACILITIES

At the end of the academic year 2018/2019 the Facilities Teams gained full control over the building operations.

STAFFING

- The addition of an admin assistant helps the facilities with the day-to-day operations and assists our engineering team with the needed help with documentations.
- The Dieter Gumpert Auditorium is now equipped with a full-time audio-visual technician who is in charge of the technical arrangements and custodianship of AV equipment.
- Additional staffing for the cleaning team was approved by the F&O SubCom in aid for the increasing logistics support of school events and sport shall weekend activities.

SECURITY AND SAFETY

- Improvement in the physical security with the introduction of new pedestrian lane and vehicle access controls installed at campus' entrances.
- Vehicle gate barriers at the main car entrance and staff parking were

installed and will further enhance the control of incoming vehicles.

- The current security system helped the security team in maintaining access control of unauthorized entries to classrooms, critical equipment and installations particularly during non-office hours, weekends and school holidays.
- Additional traffic controllers, barriers, traffic and directional signs at the sports block made it easier for the security team to regulate and improve the flow of traffic.
- Another pedestrian gate along Dairy Farm Lane (in front of Sports Hall) was opened as alternate entry point during the drop-off and pick-up timing minimizing the need for students to cross the car park entrance during heavy vehicle traffic.

COST SAVINGS INITIATIVES

Through the change in power provider from SP Services to Geneco in May 2019 we gained 25% savings on power rate which generated approximately SGD 20K per month savings.

- The scheduling of the building equipment, lighting and air-conditioning through the building management system were adjusted per operational requirements to minimize energy consumption.
- Additional automation devices were installed by the Facilities maintenance team to further control other existing lighting not presently connected to the building management system.

SUPPORT SERVICES

- The Facilities team was able to support over 2,000 assistance requests ranging from repairs, air-conditioning, relocation, cleaning and about 600 school events.
- Full staffing support was extended during the major events; Opening Ceremony, German Unity Day, CCA Fair, Christmas Bazaar, Summer Fest and VW Cup.

- (use graphic)

JUNIOR CAMPUS HANDOVER

GESS with help from the company Empire carried out the reinstatement works including the demolition of the swimming pool in compliance with Singapore Land Authority's (SLA) specifications. The handover was formalised on the same day, the 28 December 2018 and the reinstatements were completed ahead of time and within budget.

GREEN INITIATIVES

The facilities team provided ways for recycling at GESS.

- Recycling bins for materials such as bottles, plastics and paper/cartons were strategically placed along the heavy traffic areas
- The cleaning team also ensures that the used paper bins are regularly checked and collected for proper recycling disposal.



BUILDING IMPROVEMENTS

Football Field

A major defect during the construction was the drainage at the sport field. We encountered ponding and flooding during heavy downpour, and it took hours for the water to subside. The contractor finally reworked the entire field during the summer break 2019 to ensure that these floodings will be thing of the past.

Sports Hall

Retractable benches were added to provide more seat capacity for spectators on the ground floor.

Security in Science Lab

The Chemical Store (Science Lab) was equipped with "Smoke Alarm System" to aid the facilities team to detect fire at a very early stage.



OPERATIONS

Vocal and Instrumental Programme (VIP)

In the new campus, Vocal & Instrumental Programme (VIP) enjoys a state-of the-art facility consisting of 12 studios, 1 ensemble room and brand new music instruments. As a result, the VIP saw a surge in enrolment to 383 from the previous 335.

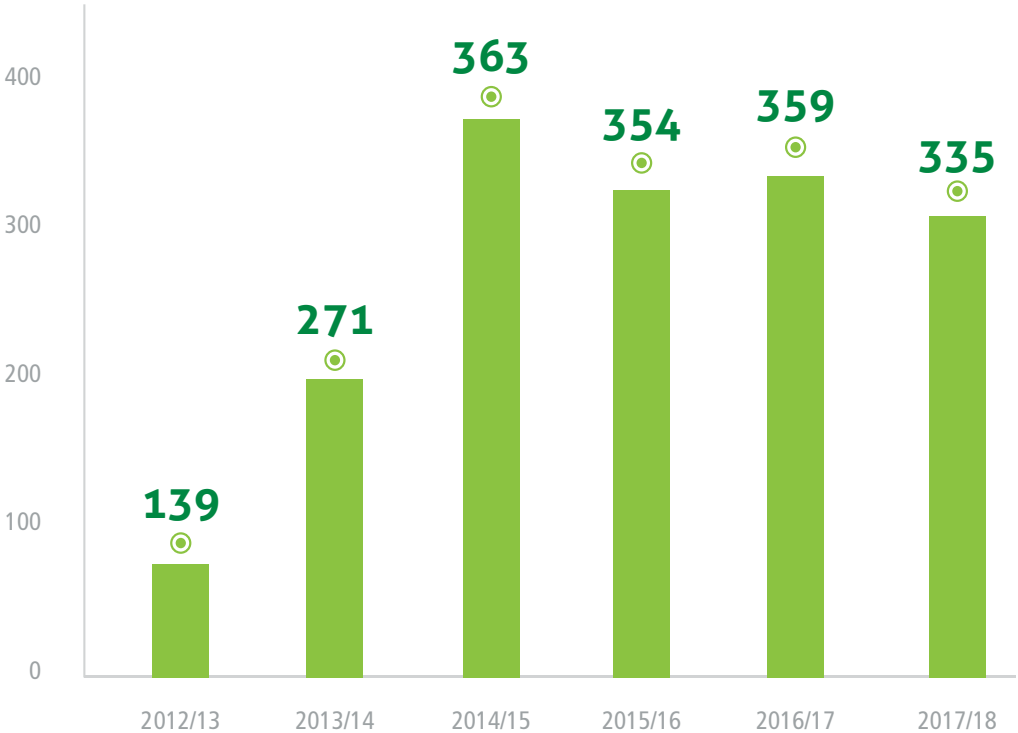
- Enrolments from the Preschool Section almost doubled compared to the previous year.
- 8 new students enrolled as a result of the “Instrument with Class programme” (IWC) and 7 students as a result of the Wind and Brass Programme this year.

In the new academic school, we plan to integrate VIP closer with the Co-Curricular Activities (CCA) musical groups. In the past 2 years, CCA department has been providing complimentary enrolment to the

Primary school VIP string students into the Junior String Ensemble CCA. Next year, it will be extended to all three CCA music groups: Orchestra, Jazz Band and Rock & Pop. The objective is to offer value-added opportunities to enhance their musical learning experience.



AY ENROLMENT COMPARISON-VIP



CO-CURRICULAR ACTIVITIES (CCA) & COMPETITIVE SPORTS (ACSIS LEAGUE)

In the academic year 2018/19 the CCA Programme saw a steady increase of enrolment number from 1600 students to over 1700. With better and larger facilities, the new campus has provided opportunities to create synergies and run bigger and more diverse range of CCAs. For example, several indoor sports can now take place at the same time due to the bigger sport halls. With the new pool facility, swimming CCA has doubled in size. The Cooking Lab allows us to accommodate cooking CCAs for 88 students ranging from grade 1-12 throughout the week.

There were altogether 81 CCAs, categorized in sports, performing arts, science & technology, language & culture and skills & lifestyle classes, conducted by over 144 instructors, with the ratio of 50/50 between internal and external providers. The biggest sport is football with over 250 participants, followed by swimming (200), basketball (150), Badminton (86), Volleyball and Track & Field.

Sports continued to be the most popular activities which ensued GESS to become a major player in the ACSIS leagues where we participated in all core sports competitions.

This year GESS has 41 school teams, involving 677 students. Throughout the academic year, GESS sports teams attained 15 Gold, 16 Silver and 9 Bronze medals across all age groups.

We hosted 62 teams (560 players) from 13 schools in the 3-day GESS Volkswagen Cup. The 2nd GESS Basketball Invitational Tournament hosted 18 teams from 9 school.

CCA Programme has also successfully nurtured and showcased our many talented students in various musical, drama and dance performances. This year the German and English Theatre and Drama CCAs featured "Fantastic Mr. Fox", "Molière: Der Geizige" and "The Hound of Music".

Musicians from GESS Orchestra, Jazz and Rock & Pop bands continued to entertain our community in events such as Christmas Bazaar, Summerfest and Summer Concert.

In other CCAs, students also learned life-time skills such as cooking, woodworking, film-making and outdoor survival skills. Although we have managed to increase the non-sport CCA portfolio to be 50/50 with the sport CCA this year, we still lack in the field of technology based CCAs due to the low number of enrolments in this category.

FACILITIES RENTAL

As part of our commitment to the Singapore government, we are sharing our sport facilities with interest groups from the local communities such as sport clubs and outreach programmes by charity organizations, as well as local schools and universities and international schools.

The following are our current partners:

- CareSG (C/O SportSG) for the Under privileged Youth Programme
- Civilians Association of Singapore for their Youth Outreach programme
- Singapore Institute of Management / Singapore University of Social Science
- National University of Singapore
- Borussia Academy Singapore
- Proform Basketball Academy
- Marsden Swimming school
- Speediswim (Water polo and Synchronised swimming)
- Tanglin Trust School



The partnerships also benefit our students, as the success of our core sports in terms of interest and performance, is partly attributed to the new opportunities provided by the external sport academies in our campus. The football, basketball and swimming academies complement our sport programme by providing extra training possibilities during the off-school hours. These academies are also the coaching teams of the respective CCAs.

GESS BUS & CANTEEN

Our service providers, Howe Catering and Kal Transport have performed phenomenal jobs in helping GESS settle into the new campus. They fully deployed their resources and expertise to make the operations of both areas seamless from day one. We have received good feedbacks from parents, students and staff alike.

HOWE CATERING

Since the move to the new campus, Howe Catering has risen to the occasion to offer not only healthy, wholesome and enticing menus, they have also increased the food variations tremendously. In the a la carte section, an average of 8 main dishes and 15 different vegetables are

offered on daily basis. In April, GESS Café started operations and it has become a phenomenal success with their gourmet sandwiches, pastries and top-notch coffee. Howe is committed to continuously improve and update their recipes by working together with parents and student committees.

Howe is also a strong supporter of GESS sustainability project and has initiated the following initiatives:

- Removal of disposables dish wares and replacement with re-usable dish wares.
- Plastic straws and plastic lids were completely removed (February 2019)

KAL TRANSPORT

Kal Transport has been GESS's school transport partners since 2007. This year, Kal Transport serviced nearly 1,000 students, with 126 routes per day. More than 80 buses of various sizes were deployed to service GESS students. Kal Transport is committed to provide bus services to everyone who needs it. In this academic year, their acceptance rate is 99.7%. The average travel time has been maintained at 30-40 minutes, except for areas such as

East Coast, Hougang and Sentosa. In June, Kal Transport was awarded with the bizSAFE level 3 by The Workplace Safety and Health Council. This certification reflects their commitment to safety and their achievement in risk management implementation.





APPENDIX

PLACEHOLDER

PLACEHOLDER

PLACEHOLDER

PLACEHOLDER

PLACEHOLDER



Connect with us:    

CPE REGISTRATION NUMBER: S72SS0010G REGISTRATION PERIOD: 22 JUNE, 2017 – 21 JUNE, 2023

